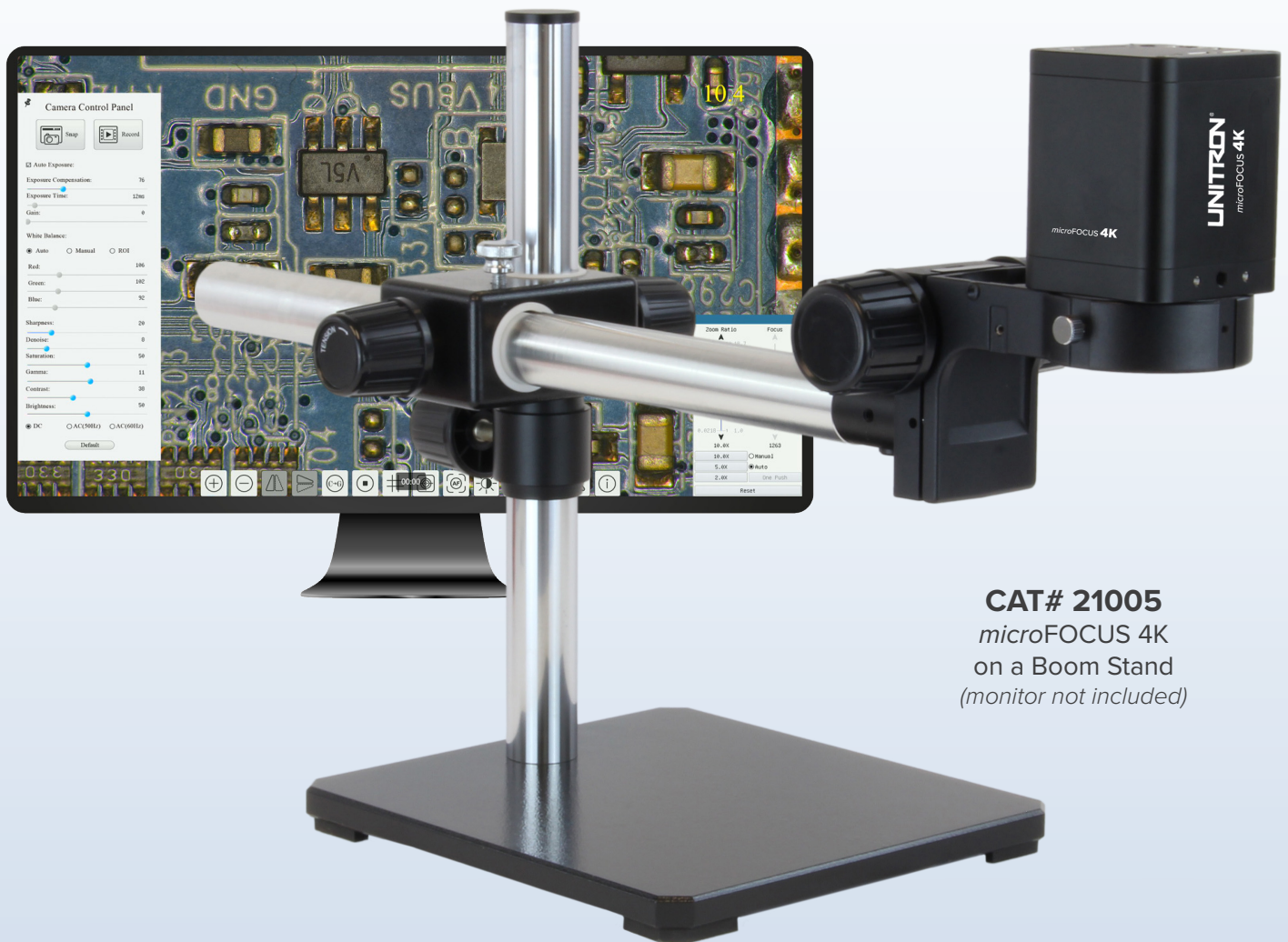


Full 4K digital microscope with autofocus  
and extreme depth of field  
for fast and accurate inspection.



**CAT# 21005**  
*microFOCUS 4K*  
on a Boom Stand  
(monitor not included)

# Speed, Resolution & Convenience in an Easy-to-Use, Stand-alone Inspection Solution!

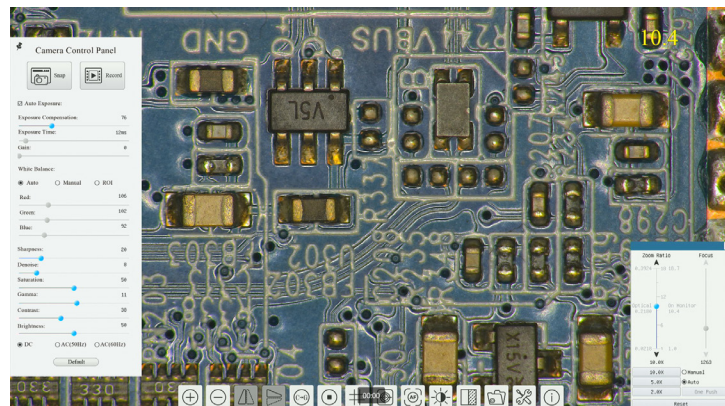
The NEW *microFOCUS 4K* autofocus digital microscope from UNITRON features built-in software for operation without the need for a PC, and includes robust features for image capture and processing, calibration, measurement, and illumination control of the included LED ring light.

Actual magnification is displayed right on the monitor. Experience outstanding full 4K image quality with no image lag. The *microFOCUS 4K* is the perfect solution for streamlining your inspection process.



## Key Features

- Live measurement and annotation tools
- Flexibility to save images, video and measurements to a USB flash drive or SD card
- Compare live with saved images using the split screen function
- Review saved images and video in the gallery
- Eliminate bench clutter with the wireless mouse and integrated LED ring light
- 4K/1080p auto-switching to accommodate monitor resolution
- **Hint:** Use AccuView or AccuView Lite PC software for expanded control and enhanced image processing and analysis



*Built-in software for image capture, processing, calibration, measurement and more!*

*Ports for wireless USB mouse (controls built-in software), HDMI for live video streaming, save images to SD card or USB flash drive, data transfer via USB Video port or LAN Ethernet connection.*

# Mounting Flexibility for a Variety of Applications



***microFOCUS 4K* on  
ball bearing boom stand  
(CAT# 21006)**



***microFOCUS 4K* on  
pole stand  
(CAT# 21004-LP)**

*\* monitors not included*



***microFOCUS 4K* on  
articulating flex arm stand  
with C-clamp  
(CAT# 21007)**

With a Ø76mm mounting ring, the *microFOCUS 4K* can be easily mounted to boom, pole or flex arm stands. Other mounting options are available via 2 x M4 holes or single ¼-20 threaded hole for mounting to a copy stand, tripod, and more!

## SPECIFICATIONS

### MICROSCOPE

Sensor	Sony IMX415 STARVIS CMOS, color
Sensor Size	1/2.8" (5.57mm x 3.13mm)
Pixel Size	1.45µm
Resolution	8MP (3840px x 2160px)
Frame Rate	30fps @ 3840x2160 (HDMI, Ethernet, USB)
Operating Environment	-10°C – 50°C 30 – 80% RH
Connectivity	USB mouse: control built-in software USB 2.0: Image storage (USB flash drive) or data transfer to PC (requires AccuView/AccuView Lite) HDMI: Image streaming to monitor LAN: Data transfer via Ethernet connection (requires AccuView/AccuView Lite) SD Card: Image storage (not included)
Monitor	Optional 13.3" attachable 4K monitor, or user-supplied HDMI monitor
Power	DC12V3A (power adapter included; UL/CE/FCC)

### OPTICAL

Working Distance	250mm
Depth of Field	205mm – 255mm
Zoom Range	1x – 18x
FOV (mm)	1x: 255 x 145 18x: 14.2 x 8
Resolution (lp/mm)	160

### BUILT-IN SOFTWARE

User Interface	Control with USB mouse (included)
Image Capture	8MP (3840x2160), JPG or TIF, save to SD card or USB flash drive
Video Record	8MP (3840x2160), 30fps, H264/H265 encoded MP4, save to SD card or USB flash drive
Camera Control Menu	Includes: Exposure, Gain, White Balance, Sharpness, Denoise, Saturation, Gamma, Contrast, Brightness
Measurement Tools	Includes: Calibration, Measurement, Measurement Parameter Export
Synthesis Controls	Includes: Zoom, Flip, Freeze, Crosshair, LED Control, Autofocus, Comparison, Browser, Setting, Version info
Autofocus Control	Includes: Zoom, Autofocus, One Push, Manual Focus, Reset

