



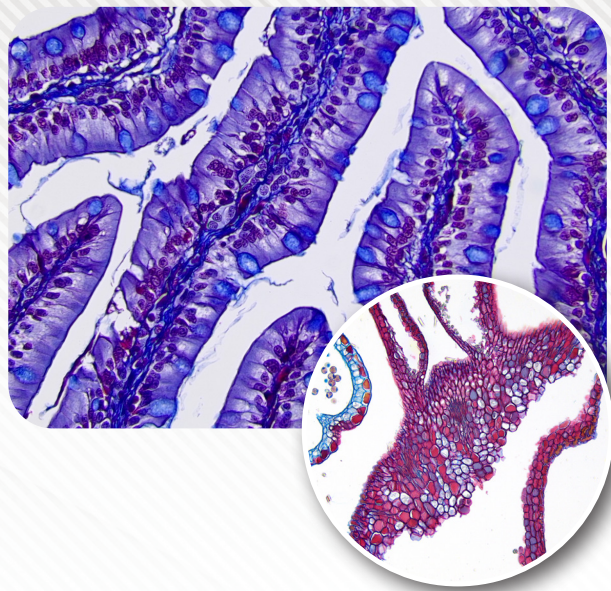
ACCU-SCOPE®

MICROSCOPY & IMAGING SOLUTIONS

3012-LED Series
Clinical Microscopes

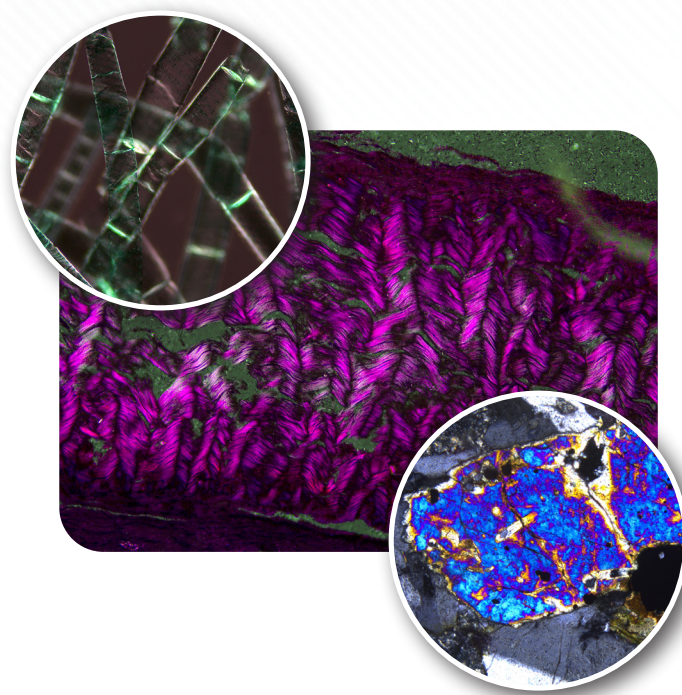


Empowering Discovery. Advancing Results.



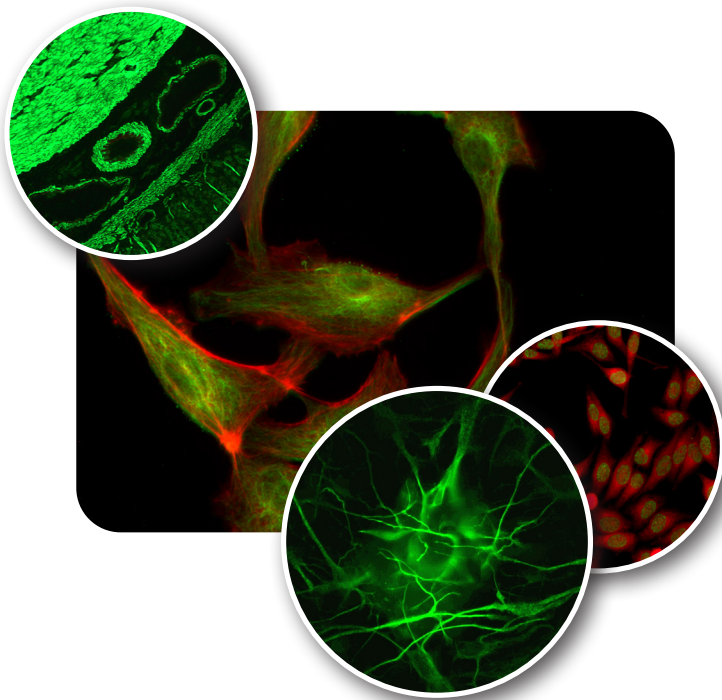
Brightfield Observation

The 3012-LED series features a brilliant 5-watt color-balanced LED for crisp brightfield images with outstanding color. The wide 22mm field of view coupled with the exceptional Infinity Plan Achromat objectives allow the user to observe 10% more of the sample than other microscopes in the same class.



Simple Polarization

Add simple polarization to your 3012-LED series microscope by placing an analyzer between the frame and the viewing head. Place the rotatable polarizer on top of the LED illumination housing. To operate, rotate the polarizer until the field is black, then enjoy the colors in the sample! Note: Use glass slides and cover glass (not plastic).



Fluorescence

Using ACCU-SCOPE's ACCU-fluor accessories, you can add one, two or three-channel fluorescence to your 3012-LED series microscope in seconds. ACCU-fluor LED fluorescence illuminators have built-in LEDs so there are no bulbs to change or align. Simply install the ACCU-fluor between the viewing head and frame, press the power button choose the fluorescence channel, adjust the intensity, and enjoy the results!

Choose Your Model



3012-LED



3012-LED-3



3012-LED-BE



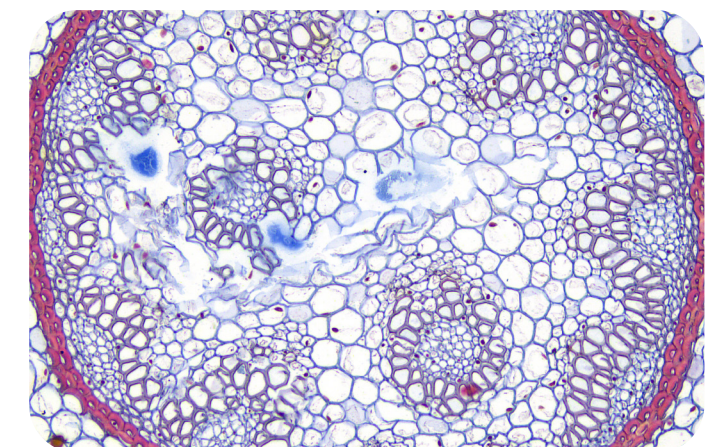
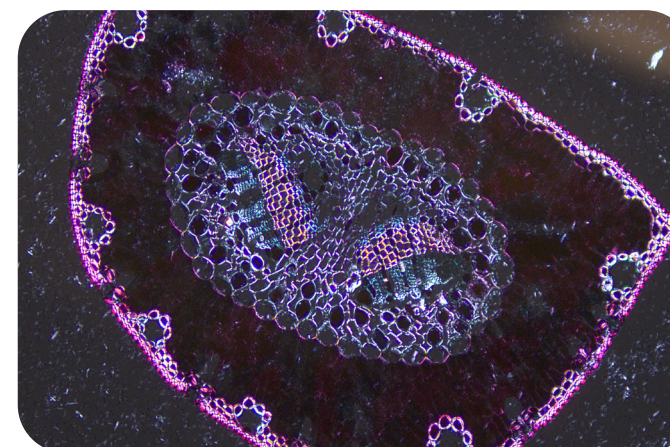
3012-LED-3BE



3013-LED



3013-LED
with HDS Lite camera
(Camera/monitor and C-mount
sold separately)



3012 Clinical Microscope

Key Features

- Infinity Achromat Objectives deliver crisp, high contrast, high resolution images
- Wide 22mm field of view and rotating binocular tubes adjust easily for different users
- Rackless stage smoothly translates the specimen during viewing
- Available with binocular, ergonomic binocular and trinocular viewing heads



3012-LED
with dual-
observation
configuration

SPECIFICATIONS

Optical System	Infinity Optical System, f = 200mm, Anti-mold treated
Viewing Head	Siedentopf type, inclination 30°, Interpupillary distance 47-75mm, 360° rotatable. Available in binocular, ergonomic binocular (5° to 35°), trinocular, or dual-observer accessory (front-to-back orientation (requires additional viewing head with eyepieces)
Eyepieces	WF10x/22mm eyepieces w/diopter, locked in to prevent tampering, accepts 26.5mm reticle; optional eyepieces include WF10x/20mm (no diopter), WF15x/16mm (w/diopter, accepts 20mm reticle), WF20x/12.5mm (w/diopter, does not accept reticle)
Nosepiece	Rear facing quintuple, ball bearing nosepiece with positive click stops to ensure parcentration
Stage	Rackless, scratch-resistant mechanical stage, size 188mm x 150mm; low position XY stage controllers; XY movement 78mm x 54mm
Condenser	N.A. 1.25 Abbe Condenser with iris diaphragm and filter holder
Focusing System	Coaxial coarse/fine focus system with adjustable focus tension; factory-set focus upper limit prevents accidental damage caused by focusing slide into objectives; fine focus sensitivity 0.2mm
Objectives	Infinity Plan Achromat 4x, 10x, 20x, 40xR*, 50xR* oil, 60x*R, 100xR* dry, 100xR* oil, 100xR* water *spring loaded
Illumination	5 watt LED with variable intensity control, LED bulb is rated for over 20,000 hours of continued use
Stand	Cast aluminum alloy
Power	Universal power supply 110v-240v, UL listed
Accessories	Dust cover, instruction manual included
Optional Accessories	Digital cameras and adapters Field iris upgrade; simple polarizer/analyzer; reticles; photo intermediate accessory; 1, 2 and 3 channel fluorescence accessory; cord hanger; microscope carry case
Warranty	5-year limited warranty for parts, labor and electronic components; 1-year warranty on LED bulb



Copyright © 2024 ACCU-SCOPE Inc. All rights reserved. Printed in the U.S.A.
ACCU-SCOPE Inc. reserves the right to change and improve specifications
without notice due to technological or manufacturing advances.



v091724