

Standard Laboratory Use Sterilizer

SN200/210/300C/310C/500C/510C

Operating temp. range 45°C to 135°C

Max. operating pressure 0.255MPa

Internal capacity 20L (SN200/210) / 32L (SN300C/310C) / 47L (SN500C/510C)

High-performance, easy operation and ergonomically designed sterilizer featuring easy top loading and handling of samples



20L
SN200

32L
SN300C

47L
SN500C

- Maximum sterilizing temperature goes up to 135°C suitable for protein modification
- By simple setting and operation, these sterilizers manage ordinary sterilization, sterilization of culture mediums and liquids, and melting of culture mediums
- Custom programs can be saved for repeated use
- Standard equipped with timer start and pre-heating features for efficient use of time and cooling fan to shorten cool down time
- Mobile on wheels

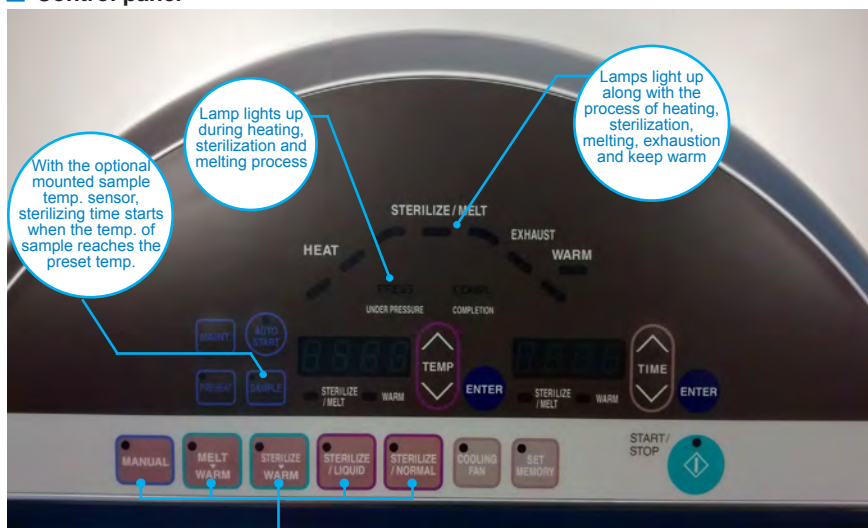
Enhanced safety device

- Lid interlock mechanism
- Drain bottle unset alarm
- Memory malfunction
- Automatic shutdown when malfunction
- Self-diagnostic functions

Specifications

Model	SN200	SN210	SN300C	SN310C	SN500C	SN510C
System	Automatic high-pressure steam sterilization					
Operating temperature range	45~135°C					
Max. working pressure	0.255MPa					
Ambient temperature	5~35°C					
Lid	Manual upward opening with an interlock for safety					
Heater	100V, 600W x 2 units		100V, 800W x 2 units		100V, 950W x 2 units	
Exhaust valve	One exhaust valve and one slow release valve					
Connection ports for optional accessories	Total 3 ports. Female thread for sample temp. sensor (1/4"), Female thread for chamber temp. sensor (1/4"), Female thread pressure sensor (branching from the solenoid valve tubing)					
Cooling fan	Axial fan motor					
Temp. controller	PID control by microprocessor					
Temp. display / setting	Digital display / digital setting by ▲/▼ keys					
Timer / Timer resolution	0 or 1 min. to 99 hrs 59 min. / 1 min.					
Operation mode	Instrument sterilization course, liquid sterilization course, sterilization and keep warm course, melting and keep warm course, customer-programmed course					
Other function	Key locking, presetting, saving, preheating, forced cooling, sample temperature sensor (option), pattern locking, up to 20 error log saving, display of accumulated working time / present time, ON-OFF beeping setting					
Safety device	Sensor failure detection, SSR short-circuit, broken heater wire, prevention of idle heating (liquid expansion type), alarm against the absence of a drain bottle, failure in locking the lid, memory error detection, pressure relief valve (0.255 MPa)					
External dimensions (WxDxHmm)	400 x 530 x 848		460 x 590 x 848		460 x 590 x 1068	
Internal dimensions of chamber	I.D.300 x D305 mm		I.D.300 x D445 mm		I.D.300 x D665 mm	
Internal capacity	20L		32L		47L	
Weight	~65kg		~75kg		~85kg	
Power source	AC100~120V(15~12.5A) with plug	AC200~240V(7.5~6.5A) no plug, round terminal	AC100~120V(15~12.5A) no plug, round terminal	AC200~240V(10~8.5A) no plug, round terminal	AC100~120V(23.5~19.5A) no plug, round terminal	AC200~240V(12~10A) no plug, round terminal
Accessories	2 pcs. stainless steel mesh basket (Dia.205 x D204mm), OSM-60		2 pcs. stainless steel mesh basket (Dia.262 x D204mm), OSM-70		3 pcs. stainless steel mesh basket (Dia.262 x D204mm), OSM-70	
	Vapor cup x 1, Drain bottle x 1, Drain board x 1, Chemical indicator 1 set (30 pieces), Filter x 1					

Control panel



Sterilize/Normal Course	Sterilization of equipment such as flask, beaker, test tube, scissors
Sterilize/Liquid Course	Sterilization of culture and reagents and keep warm
Sterilize Warm Course	Dissolve and keep warm of the agar medium
Melt Warm Course	Sterilization of liquid, purified water and dilution water
Manual Course	Customized temperature and time settings

Standard Equipped with Cooling Fan & Slow Release Valve

- For decompression and prevention of liquid samples from bumping
- Cooling fan cool to a safe temperature after sterilization completes
- Shortens time before samples are taken out
- Natural cooling by OFF setting

Features

Support GLP / GMP Inspection

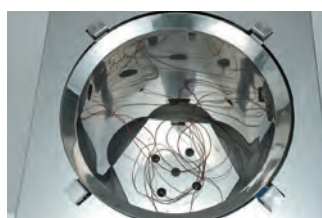


Standard equipped with 2 sensor ports on the main unit



Optional recorder and high performance pressure gauge

Sterilization starts automatically by sample temperature sensor



With the optional mounted sample temperature sensor, desired sample temperature can be precisely maintained to ensure thorough sterilization

Easy to drain out sterilizing water



Easier maintenance with larger diameter drain pipe

Front Loading Drain Bottle



The drain bottle is located in front for easy access and drain water level can be monitored without opening the cabinet door

Optional items

Baskets with adjustable stainless steel perforated plate

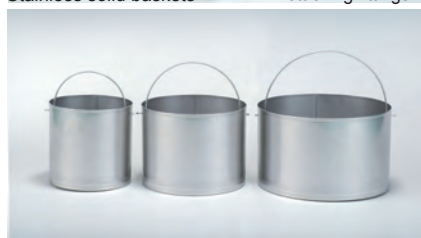
Mesh baskets

Stainless solid baskets



Baskets with stacking fittings

- Stainless baskets



- Stainless buckets

Product code	Model	Description	Corresponding models
241087	OSM-60	Mesh basket	SN200/210
241088	OSM-70		SN300C/310C/500C/510C
241089	OSM-80		SN500C/510C
241093	OSQ-30	Mesh basket with stacking fittings	SN200/210, with two fittings
241092	OSQ-40		SN300C/310C, with two fittings
241091	OSQ-50		SN500C/510C, with three fittings
241096	OSQ-60	Mesh basket with adjustable stainless steel perforated plate	SN200/210, with 1 plate
241095	OSQ-70		SN300C/310C, with 1 plate
241094	OSQ-80		SN500C/510C, with 2 plates
241083	OSR-10	Stainless solid basket	SN200/210
241084	OSR-20		SN300C/310C/500C/510C
241150	OSN10	Stainless bucket	SN200/210
241151	OSN12		SN300C/310C/500C/510C
Please specify when ordering main unit		Chamber temp. sensor	Type T thermocouple, 3 pcs./set
		Sample temp. sensor	Type T thermocouple, 1 pc.
		Pressure gauge	External installation
		External alarm output terminal	
		Temp. output terminal	4 - 20 mA
		Time-up output terminal	Relay, contact output