



# CELL DISRUPTOR GENIE™



## *Affordable Bead Beater for Cell Disruption and Pellet Re-suspension in Microtubes*

A powerful mechanical cell disruption device ideal for challenging glass bead procedures, including the disruption of yeast cells, bacteria, tissue or any sample requiring violent high-speed agitation. Digital variable speed model and Fixed speed model available - both support timed or continuous operation. Supports high-throughput disruption of up to 12 microtubes, 1.5 mL or 2.0 mL, snap cap or screw cap.

### *Unique Features:*

- **Patented Dual-motion Mixing**

A unique patented mechanism combines vortex and disruption, enabling sample-bead collisions or breaking of pelletized samples directly within the tube.

- **Use with Disruptor Beads™**

Made from spherical lead-free soda lime glass, the Disruptor Beads™ are available in two sizes: 0.1 mm beads, ideal for bacteria samples, and 0.5 mm beads, perfect for yeast or fungi samples.

- **More than Disruption**

Simply remove the microtube holder and snap on the pop-off cup to enable continuous or timed high-speed vortexing of single test tubes.

# CELL DISRUPTOR GENIE™

## Specifications

Model	Disruptor Genie	Digital Disruptor Genie
Control	Analog	Digital
Display	-	Red LED
Accessories Included	Universal Microtube Holder, Pop-off Cup	
Capacity	12x 1.5/2.0 mL microtubes	
Speed Range	3000 rpm 2850 rpm (for 50Hz models)	1000 rpm - 3000 rpm 1000 rpm - 2850 rpm (for 50Hz models)
Speed Alarms	-	On/Off, Adjustable
Timer	0-15 minutes	1-99 minutes
Safety Certification	CE; ETL	
Power	120V, 0.65A, 60Hz 230V, 0.5A, 50Hz 100V, 1.0A, 50Hz	120V, 0.65A, 60Hz 230V, 0.5A, 50Hz 100V, 1.0A, 50/60Hz
Dimensions (L x W x H)	165 x 122 x 190 mm	
Net Weight	4.3 kg	
Working Environment	0°C - 38°C, 95%RH, non-condensing	

## Accessories



83041243 (REF #: SI-V209)

**Vertical High Speed  
Microtube Holder**



83041423 (REF #: OK-0500-902)

**3" Platform Head With Rubber  
Cover Kit**



83041438 (REF #: 146-3011-00)

**Pop-Off Cup Head**



83041441 (REF #: OK-0236-408)

**Molded Bottom Closure And  
Screws Kit, Re**



83041475 (REF #: OK-0500-901)

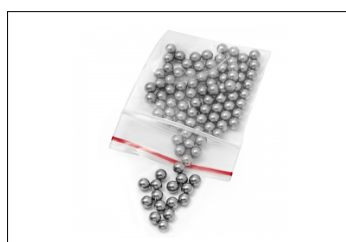
**3 inch Platform Head,  
without rubber cov**



83041297 (REF #: SI-BSG07)

**Genie Bead Sample Pack**

5 types of beads included



83041298 (REF #: SI-BS05)

**Stainless Steel Beads, 5mm**

Stainless Steel 316 Beads  
may be used for tough animal tissue  
and resilient samples

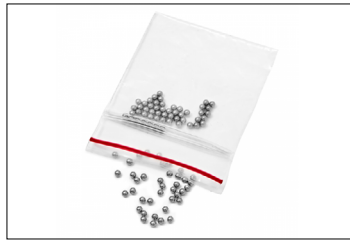


83041299 (REF #: SI-BS03)

**Stainless Steel Beads, 3.2mm**

Stainless Steel 316 Beads  
may be used for tough animal tissue  
and resilient samples

# CELL DISRUPTOR GENIE™



83041300 (REF #: SI-B502)

**Stainless Steel Beads, 2.4mm**

Stainless Steel 316 Beads  
may be used for tough animal tissue  
and resilient samples



83041301 (REF #: SI-BG05)

**Disruptor Beads, 0.5mm,  
375g (8 fl. oz.)**

Soda Lime Glass Beads  
may be used for yeast, fungi



83041302 (REF #: SI-BG01)

**Disruptor Beads, 0.1mm,  
375g (8fl. oz.)**

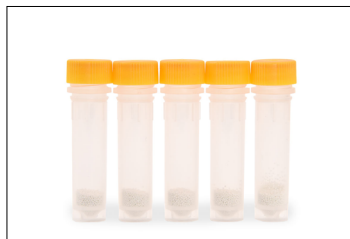
Soda Lime Glass Beads  
may be used for bacteria, spores



30391402

**Lysis Tube 100x2mL  
100µm ZrO2 Beads**

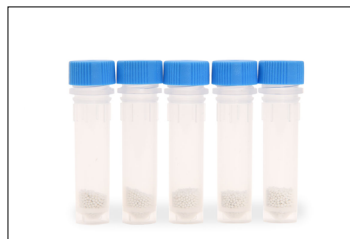
Zirconium Beads  
may be used for bacteria, spores



30391404

**Lysis Tube 100x2mL  
400µm ZrO2 Beads**

Zirconium Beads  
may be used for yeast, algae, spores



30391405

**Lysis Tube 100x2mL  
800µm ZrO2 Beads**

Zirconium Beads  
may be used for fungal mycelium, cells,  
spores, eukaryotic algae



30391406

**Lysis Tube 100x2mL  
1.4mm ZrO2 Beads**

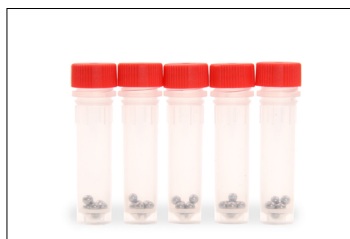
Zirconium Beads  
may be used for soft tissues, cultured  
cells and blood, thin sections of fungal  
thallus, soft plant material



30391408

**Lysis Tube 100x2mL  
3mm ZrO2 Beads**

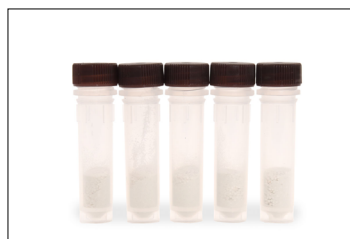
Zirconium Beads  
may be used for plant, stems, roots,  
leaves



30391409

**Lysis Tube 100x2mL  
3mm SS. Beads**

Stainless Steel 440C Beads  
may be used for tough animal tissue  
and resilient samples



30391410

**Lysis Tube 100x2mL  
0.1/0.8/3mm ZrO2 Bead**

Zirconium Beads  
may be used for feces, soil, sediments,  
biofilms



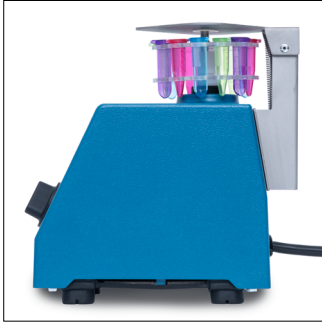
30391433

**Lysis Tube 14x2mL Sample Kit**

7 types of beads included

# CELL DISRUPTOR GENIE™

## Disruptor Close Up



## Use with Accessory Attachments



with 83041243 (SI-V209)



with 83041423 (OK-0500-902)



with 83041438 (146-3011-00)

## Other Features and Equipment

Zinc-casted housing with “no-walking feet” design, universal microtube holder, mounting bracket, adjustment knob with dial markings, or independent LED displays for digital models, use with 1.5mL or 2.0mL microtubes with snap or screw caps, hands-free operation, cold room and incubator compatible, speed monitor and alarm on digital model, sleep mode for energy saving on digital model.

## Compliance

- **Product Safety:** IEC/EN 61010-1; IEC/EN 61010-2-051; CAN/CSA C22.2 61010-1-12; CAN/CSA C22.2 61010-2-051; UL 61010-1; UL 61010-2-051
- **Electromagnetic Compatibility:** IEC/EN 61326-1 Class A, Industrial environments; Canada ICES-003 Class A; FCC Part 15 Class A
- **Compliance Marks:** ETL; CE; RCM; WEEE

**MULTI-FUNCTION INCUBATOR GENIE™**

**Refrigerate, Heat, Rotate, Rock, Stir, and Shake All in One Compact Benchtop Equipment**

Genie incubator offers precise, ambient temperature control for demanding production and investigation applications without occupying much space. Compact front-loading design supports sustainable lab practices. The integrated digital control displays help reduce consumption for smaller size applications. Genie's user-selectable incubation modes, control, and alarm allow users to maximize benchtop space and productivity.

**Unique Features:**

- Designed for Precision: Built for Versatility: Sized for Any Lab.
- Comprehensive control options include temperature, rotation, rocking, mixing, and stirring capabilities.
- Unique High-Range System Offers Unlimited Combination and Flexibility
- Built-in digital and analog read-out displays of time, date, temperature, speed, and all program results. Reads attach to the magnetic platform at any angle in any orientation.
- 4-point leveling feet for maximum accuracy.
- Includes control of ambient temperature, rotation, speed, time, and alarm.
- ETL and CE marked and UL approved. For the flexibility to maintain, profile storage and address scheduling.



**2 Block Dry Block Heaters**

**Versatile Block Heaters Designed for Everyday Use with Accessories for Every Application**

Block Dry Block Heaters are ideal for applications that require temperature stability. All units have a digital readout and magnetic rotation blocks with over 40 blocks. Blocks are easy to use, easy to replace. Cleanable block contact enables maximum heat retention, resulting in efficient heating. Block supports offer increased temperature uniformity and stability for specialized needs, under full load conditions.

**Unique Features:**

- Three models to customize your application. All models offer exceptional temperature stability with increasing temperature stability.
- Solid construction to ensure repeatable, stable results. The Heatback with Heated Lid features a second heater in the lid to increase conduction to maintain your sample integrity.
- Precision temperature accuracy: digital models include sample stage compensation. Heaters for North America are ETL listed to a recognized safety standard for temperature exposure.



80777163\_A 20260120 © Copyright OHAUS Corporation

**OHAUS Europe GmbH**  
 e-mail: [ssc@ohaus.com](mailto:ssc@ohaus.com)  
 Tel: 0041 22 567 53 19  
 e-mail: [tsc@ohaus.com](mailto:tsc@ohaus.com)  
 Tel: 0041 22 567 53 20  
[www.ohaus.com](http://www.ohaus.com)

The management system governing the manufacture of this product is ISO 9001:2015 certified.

